

TOP TIPS TO KEEP YOU SAFE!



Guide to SAFETY



**Scottish & Southern
Electricity Networks**

Meet the Power Pack Pals

THE POWER PACK PALS ARE FOUR GREAT FRIENDS WHO WE WILL HELP YOU TO UNDERSTAND WHY ELECTRICITY, THE 'MAGIC POWER', IS VERY IMPORTANT IN OUR WORLD BUT ALSO VERY DANGEROUS, AND SHOULD BE TREATED WITH EXTRA SPECIAL CARE. LET'S MEET THE POWER PACK GANG:



HERE IS PROFESSOR PENELOPE. SHE KNOWS EVERYTHING THERE IS TO KNOW ABOUT ELECTRICITY AND ABOUT STAYING SAFE.



THIS IS PERCY PIGEON. CHECK OUT HIS POWER PACK. HE WORKS WITH PROFESSOR PENELOPE TO FIND ANY PROBLEMS THAT NEED TO BE SORTED.



THIS IS PETER. HE KNOWS HOW TO STAY OUT OF TROUBLE. HE'S GREAT AT PUZZLES.



THIS IS POLLY. SHE'S PETER'S BEST FRIEND. SHE LOVES EXPLORING OUTDOORS.

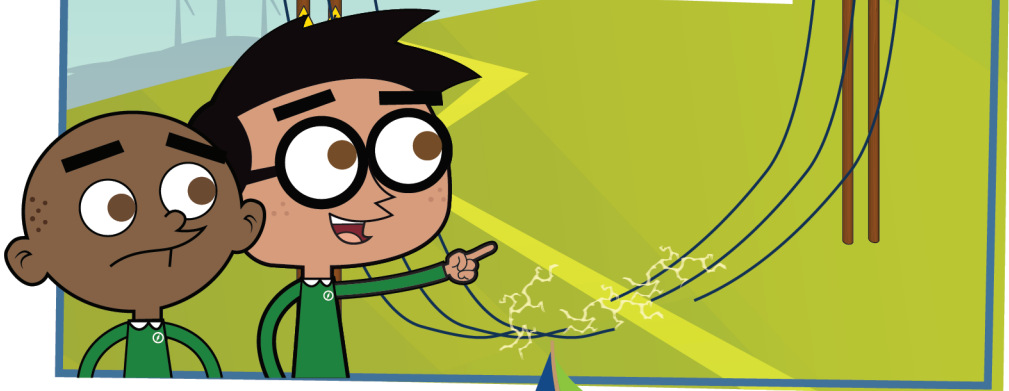
LOOK OUT, LOOK UP!

NEVER CLIMB POLES OR PYLONS THAT HOLD UP ELECTRICITY CABLES. IF YOU TOUCH ONE OF THE CABLES IT COULD KILL YOU.

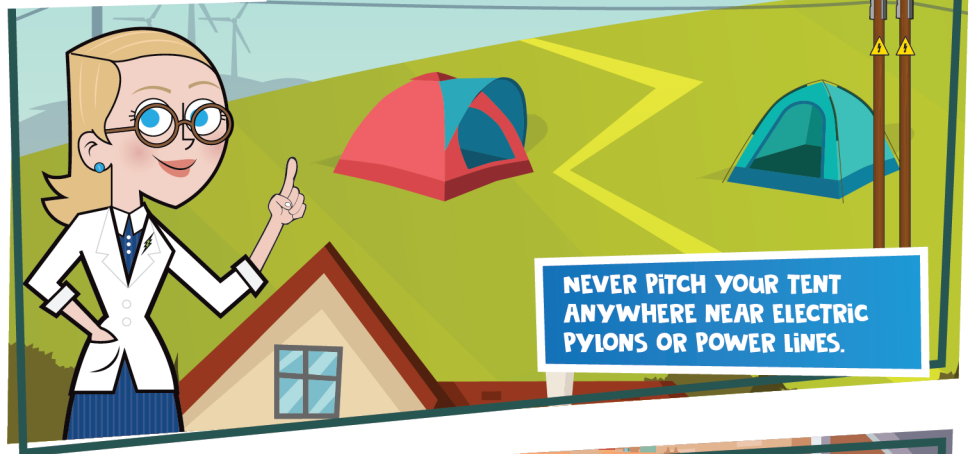
TOP TIPS
TO KEEP YOU SAFE OUTSIDE

WATCH OUT WHERE YOU GO FISHING. ALWAYS LOOK OUT AND LOOK UP! NEVER FISH NEAR ELECTRICITY PYLONS OR POWER CABLES

IF YOU SEE BIG CABLES ON THE GROUND STAY FAR AWAY! THESE MIGHT BE LIVE ELECTRICITY CABLES AND ARE VERY DANGEROUS!



WATCH OUT!
WHERE YOU GO CAMPING.

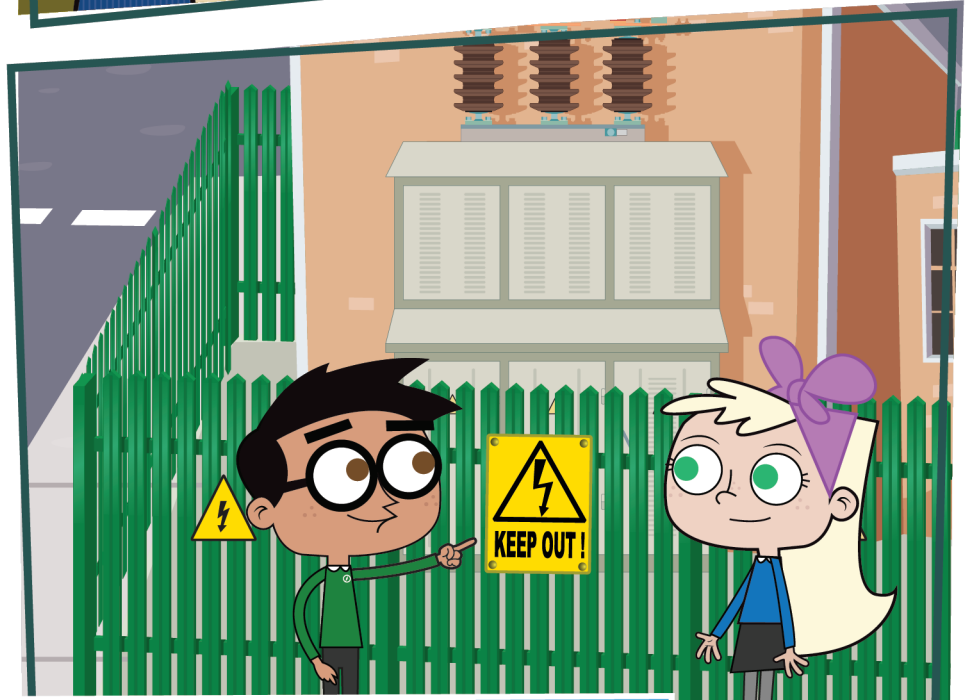


NEVER PITCH YOUR TENT ANYWHERE NEAR ELECTRIC PYLONS OR POWER LINES.

FLYING DRONES OR KITES IS GREAT FUN...
...BUT
WATCH OUT!



THEY CAN GET CAUGHT UP ON THE ELECTRIC CABLES AND COULD GIVE YOU AN
ELECTRIC SHOCK!



ALWAYS STAY AWAY FROM ELECTRICITY SUBSTATIONS. THE EQUIPMENT INSIDE THEM IS EXTREMELY POWERFUL AND DANGEROUS.

THE END

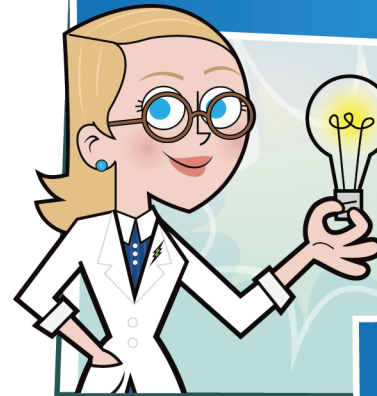
TOP TIPS TO KEEP YOU SAFE AT HOME

EVERYBODY KNOWS THAT ELECTRICITY IS VERY IMPORTANT IN TODAY'S WORLD -YOUR TELEVISION, YOUR GAMES CONSOLE, PHONES AND TABLETS ALL NEED ELECTRICITY TO WORK.

It's The Magic Power!

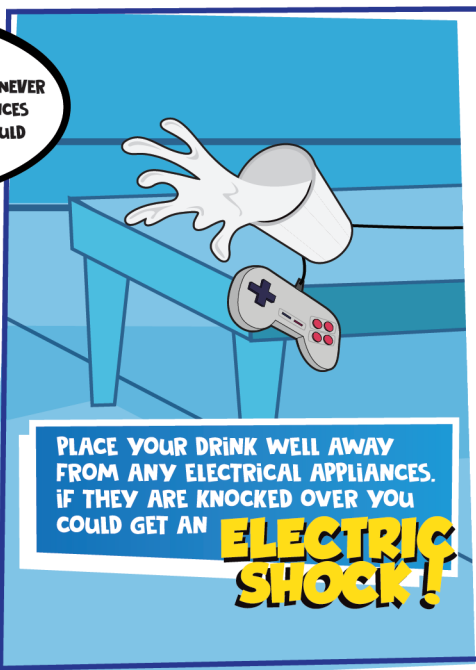
BUT ELECTRICITY IS ALSO DANGEROUS. IT CAN REALLY HURT YOU

IF YOU NEED TO CHANGE A LIGHTBULB, ALWAYS ASK AN ADULT TO HELP.



MAKE SURE YOU DON'T PULL AN ELECTRICAL CORD FROM THE WALL. PULLING ON A CORD CAN DAMAGE THE APPLIANCE, THE PLUG OR THE CABLE.

WATER CONDUCTS ELECTRICITY. SO IT'S IMPORTANT NEVER TO TOUCH ELECTRICAL APPLIANCES WITH WET HANDS OR YOU COULD GET AN ELECTRIC SHOCK



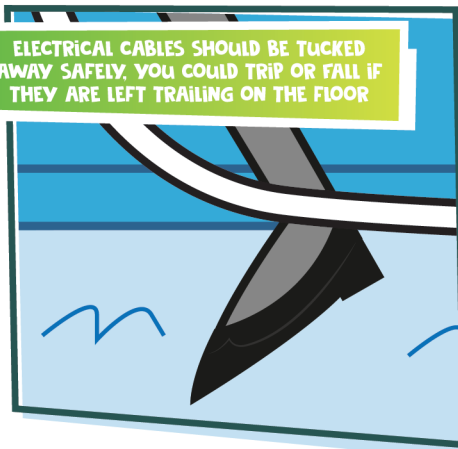
PLACE YOUR DRINK WELL AWAY FROM ANY ELECTRICAL APPLIANCES. IF THEY ARE KNOCKED OVER YOU COULD GET AN **ELECTRIC SHOCK!**

ALWAYS REMEMBER TO TURN OFF ELECTRICAL ITEMS WHEN YOU'RE NOT USING THEM -

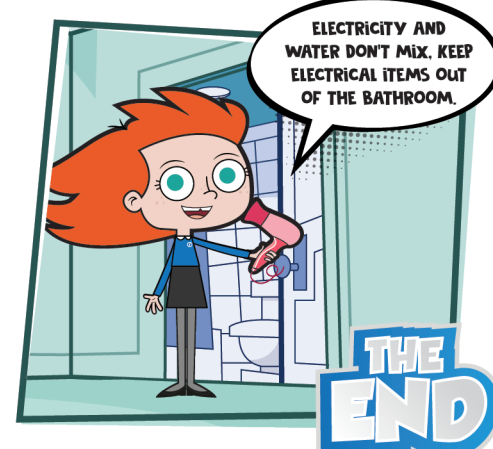


ESPECIALLY WHEN YOU GO TO BED!

ELECTRICAL CABLES SHOULD BE TUCKED AWAY SAFELY, YOU COULD TRIP OR FALL IF THEY ARE LEFT TRAILING ON THE FLOOR



ELECTRICITY AND WATER DON'T MIX. KEEP ELECTRICAL ITEMS OUT OF THE BATHROOM.



THE END



Scottish & Southern
Electricity Networks



Play our games at
www.powerpackpals.com